

LEGEND
Proposed Routing

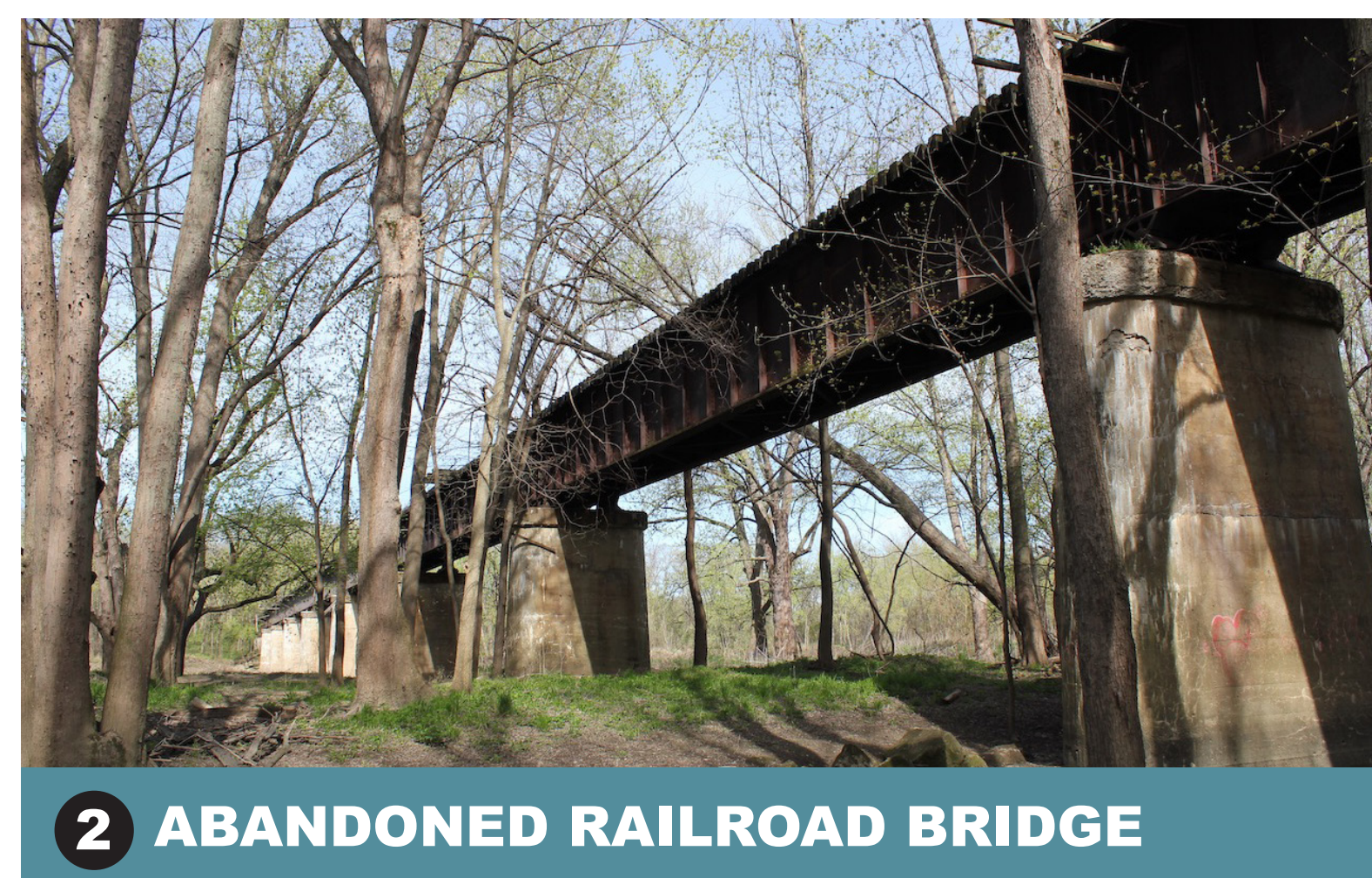
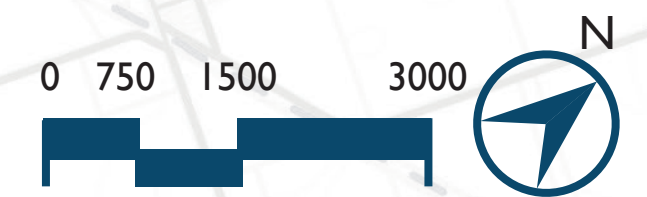
PROPOSED SIDEPATH
PROPOSED SHARED USE/SIGNED ROUTE ALONG GRAVEL TO ASPHALT PAVING
PROPOSED SHARED USE/SIGNED ROUTE
PROPOSED TRAIL
EXISTING TRAIL UPGRADED TO ASPHALT
PRIMARY ROUTE
ALTERNATE ROUTE
PROPOSED PARK MASTER PLAN UPDATE

SYMBOLS

HAND-CARRY ACCESS
BOAT LAUNCH
BRIDGE CROSSING
TRAILHEAD
PARKING
PARKS

LEGEND
Existing Conditions

FEMA FLOODWAY
PARCELS
WATER BODIES
ARTERIAL
LOCAL/COUNTY ROAD
CONTOURS
HISTORIC CANAL ROUTE
EXISTING TRAILS
EXISTING BIKE ROUTE
PARKS AND OPEN SPACE
WABASH RIVER
MAJOR TRIBUTARIES
COUNTY LINE
CORPORATE BOUNDARY
RAILROAD



Flex-n-Gate Corp
Lape Properties LLC
Covington Grain Inc

US 136 Bridge over Wabash River
No. 136-86-06086 C
Clear Width: 43'

Five Crossings Park Boat Launch
(River Mile 265.9)

Five Crossings Park

Abandoned Railroad Bridge

To Waterman Public Access Site

700 W Bridge over Opossum Run
Clear Width: ~ 25'

SR 263 Bridge over Redwood Creek
No. (263)63-86-01874 A
Clear Width: 29'

Sandhill Rd Bridge Over Mud Run
Clear Width: ~ 26'

W 260 N Bridge Over Mud run
Clear Width: ~ 22'

Sandhill Rd Bridge over Mallory Branch
No. 23-00129
Clear Width: ~ 15'

SR 263 Bridge over Redwood Creek
No. (263)63-86-04697 B
Clear Width: 32.9'

Portland Arch Rd Bridge
Clear Width: ~ 15'

Portland Arch Rd Bridge over Mallory Branch
No. 23-00124
Clear Width: 26'

Covington City Park
Circle Trail

To Veedersburg

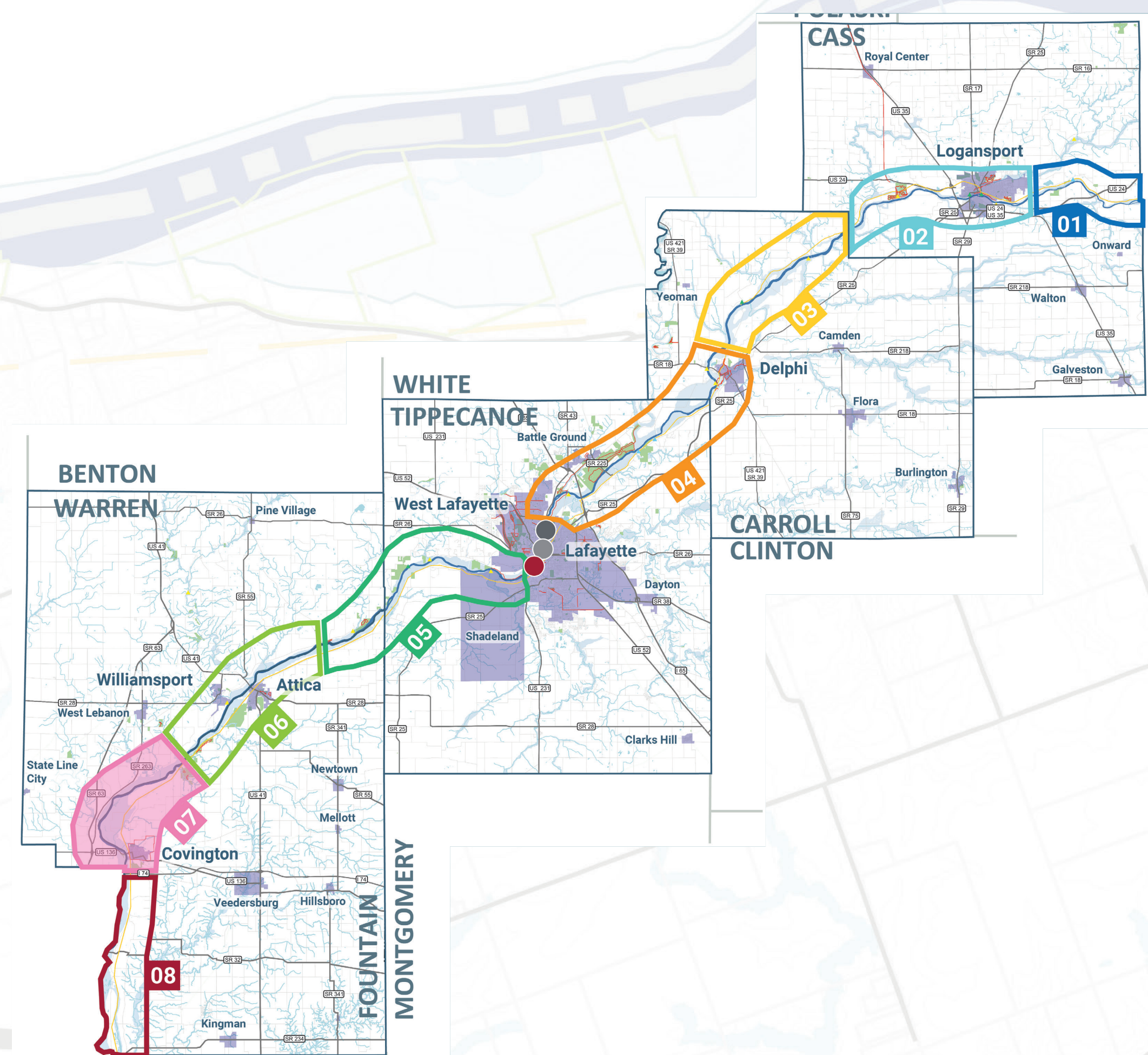
Washington St Bridge over Bear Creek
No. 23-00132
Clear Width: 24'

Portland Arch Nature Reserve

CR 650 S Bridge over Dry Run
Clear Width: ~ 15'

To Williamsport

To Attica

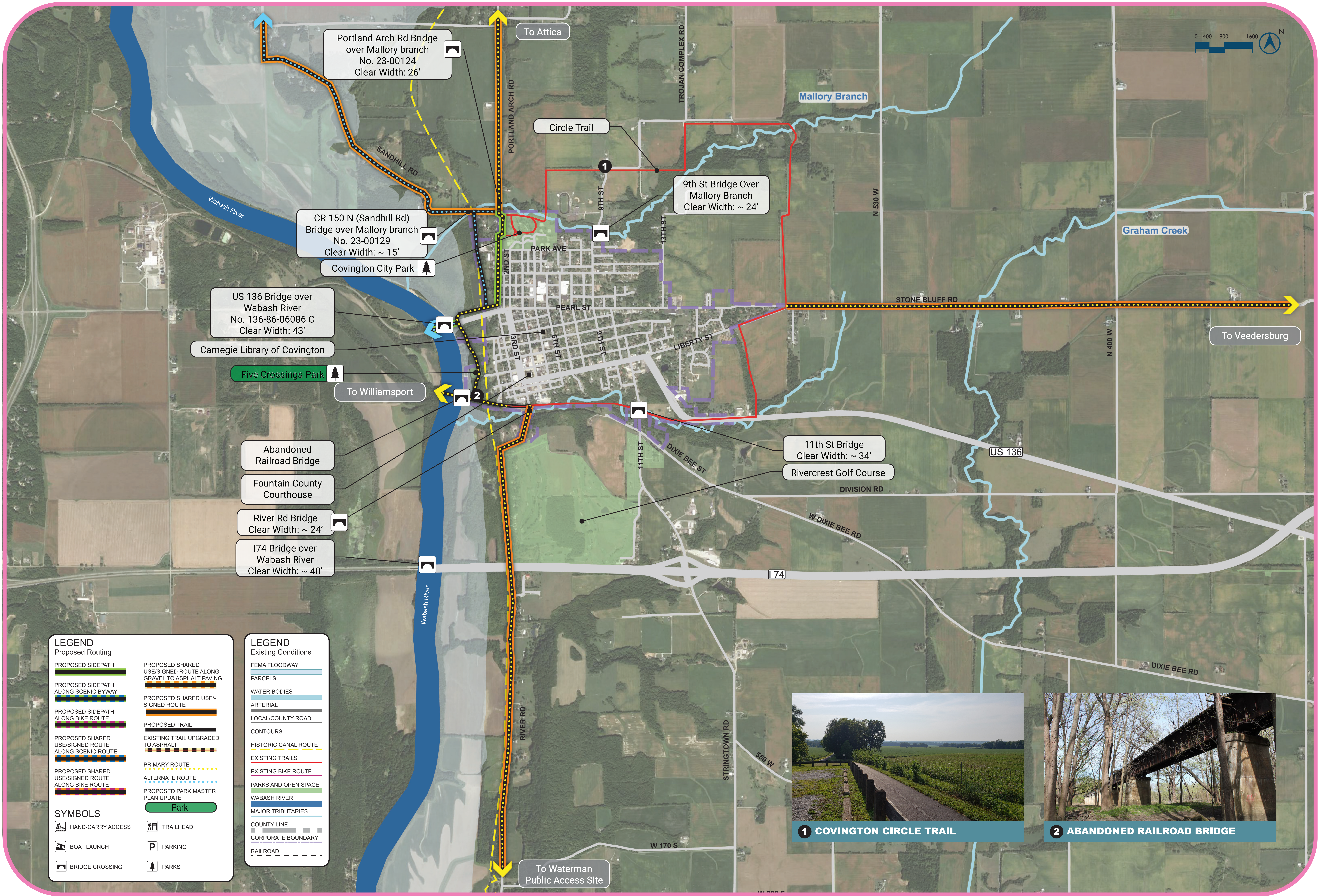


REACH 07

Portland Arch to I-74



August 17th, 2021



LEGEND
Proposed Routing

PROPOSED SIDEPATH
ALONG SCENIC BYWAY

PROPOSED SIDEPATH
ALONG BIKE ROUTE

PROPOSED SHARED
USE/SIGNED ROUTE
ALONG SCENIC ROUTE

PROPOSED SHARED
USE/SIGNED ROUTE
ALONG BIKE ROUTE

SYMBOLS

HAND-CARRY ACCESS

BOAT LAUNCH

BRIDGE CROSSING

PROPOSED SHARED
USE/SIGNED ROUTE ALONG
GRAVEL TO ASPHALT PAVING

PROPOSED SHARED USE/
SIGNED ROUTE

PROPOSED TRAIL

EXISTING TRAIL UPGRADED
TO ASPHALT

PRIMARY ROUTE

ALTERNATE ROUTE

PROPOSED PARK MASTER
PLAN UPDATE

Park

TRAILHEAD

PARKING

PARKS

LEGEND
Existing Conditions

FEMA FLOODWAY

PARCELS

WATER BODIES

ARTERIAL

LOCAL/COUNTY ROAD

CONTOURS

HISTORIC CANAL ROUTE

EXISTING TRAILS

EXISTING BIKE ROUTE

PARKS AND OPEN SPACE

WABASH RIVER

MAJOR TRIBUTARIES

COUNTY LINE

CORPORATE BOUNDARY

RAILROAD

