



WABASH RIVER
ENHANCEMENT CORPORATION

WABASH RIVER GREENWAY CORRIDOR Master Plan

WABASH RIVER
ENHANCEMENT CORPORATION

Kimley»Horn



Client:

Wabash River Enhancement Corporation (WREC)

Wabash Heartland Innovation Network (WHIN) – grant funding

North Central Health Systems (NCHS) – grant funding

Location:

Ten (10) Indiana counties along the Wabash River connected via tributaries:

Primary River Corridor Counties: Fountain, Warren, Tippecanoe, Carroll and Cass

Secondary Counties: Benton, White, Pulaski, Clinton and Montgomery

Duration:

18 months: June 2020 through November 2021



Deliverables

Primary Deliverables

- Draft Plan Documents
- Final Plan Documents
- Approximately 50 Programmed Meetings, Presentations
- Promotional Toolkit

Additional Deliverables

- Historical and Cultural Research
- GIS Base Mapping
- River System Impacts
- Needs and Benefits Analysis
- Public Engagement Meetings
- Project Website and Newsletters
- Online Survey (x2)
- Proposed Trail Routing Plan
- Phasing Plan
- Cost Estimating and Funding Plan
- WRG Brand Development
- Promotional Videos (x2)
- Event Coordination
- Pilot Project Identification

[illegible]



Scope of Work



TASK 1:

Existing Conditions Documentation and Information Review

Existing Plan
Review

Historical
Research

GIS Base Mapping

Physical Inventory
/ Assessments of
ROW

External
Connectivity
Opportunities

Existing Trail
Systems



TASK 2: Needs and Benefits

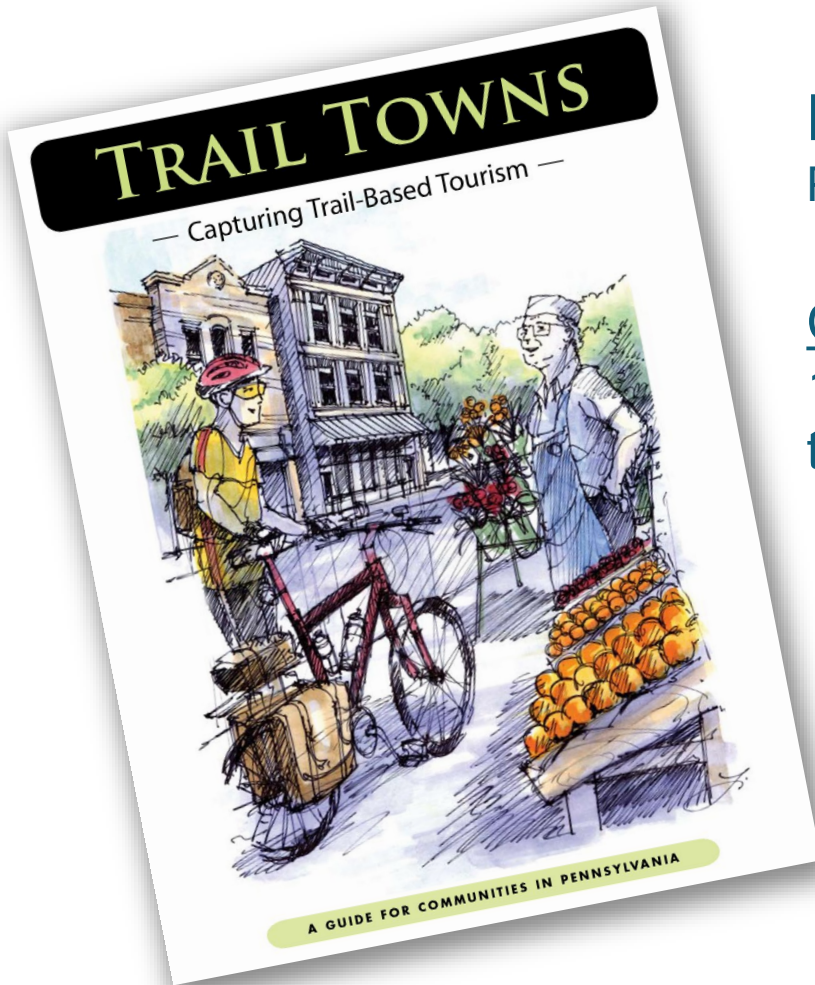
County Profiles

Corridor
Attractions and
Amenities

Return on
Investment Case
Studies



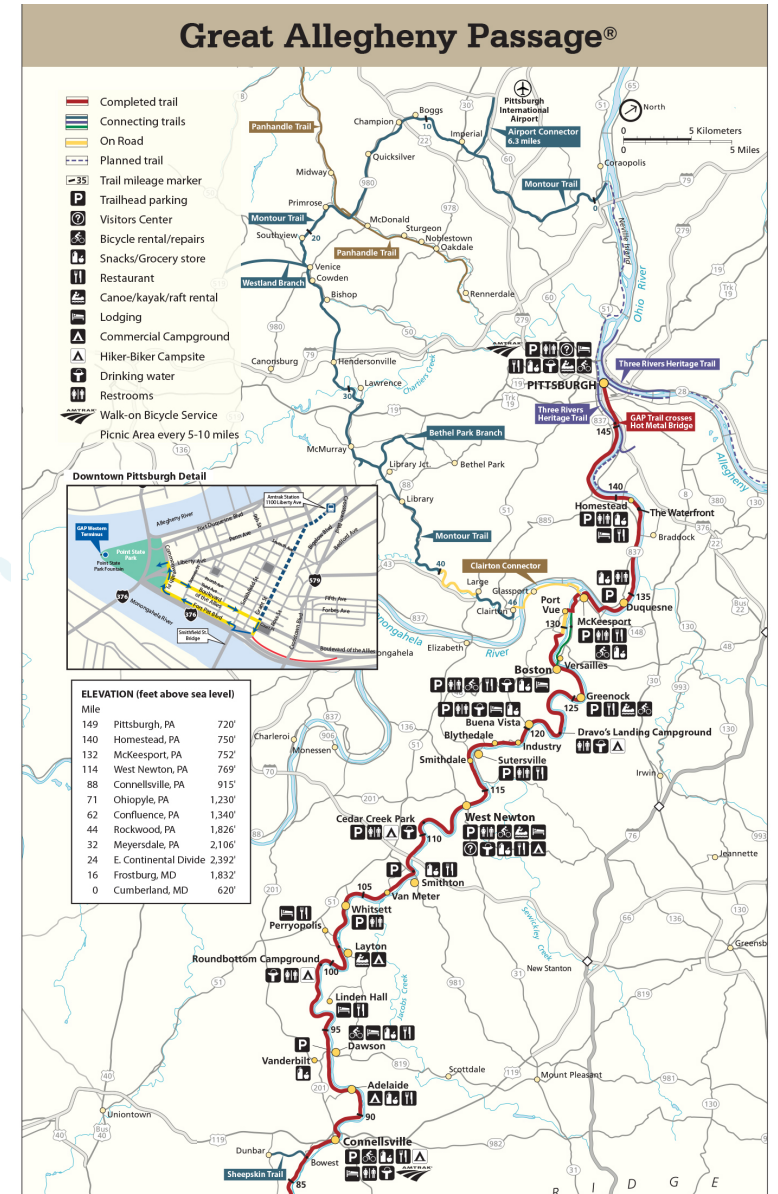
TASK 2: Needs and Benefits



Pennsylvania Potomac and Youghiogheny Rivers

C and O Canal Towpath
185 mile trail from Washington, DC
to Cumberland, PA

GAP Trail
150 mile trail from
Cumberland to Pittsburgh, PA





TASK 3: Public Involvement and Engagement

Guiding Principles

- Protect Fundamental Resources and Values
- Connect the Greenway to Other Places
- Provide Opportunities for Many Greenway Experiences
- Design Greenway Improvements and Facilities to the Highest Standards
- And more...

Face-to-face Engagement

- Eight (8) Steering Committee Meetings
- Seven (7) Public Workshops
- Four (4) Elected Officials Workshops
- Twenty (20) Stakeholder Interviews
- Eight (8) Board Meetings: 6 WREC, 2 WHIN

Project Communications

- Project Website
- Newsletters (x3)
- **Online Surveys (x2)**



TASK 3:

Public Involvement and Engagement



Project Video

The project video is available on YouTube for viewing.





TASK 3:

Public Involvement and Engagement




Public participation is solicited without regard to race, color, religion, disability, income, or family status. Persons who require special accommodations under the Americans with Disabilities Act or translation services (free of charge) should contact Lynn Barr, AICP at the CRTPA at (850) 891-6800.

Stay Involved!

The CC2ST Project Team encourages you to stay involved as the project moves forward. Your input directly shaped the CC2ST Master Plan by identifying and prioritizing trails, describing desired amenities, and specifying the way to market and promote the trails. As the master plan is implemented, your input will continue to be vital.

You can continue to engage with us through the project website, the project Facebook page, and through Twitter. Public meetings and other opportunities to provide input will be announced through each of these.

 "Like" us on Facebook at www.facebook.com/CC2ST

 @CC2STrails Follow us on Twitter at www.twitter.com/CC2STrails



Right-of-Way on US 98

Project Schedule

Task	Completion
PD&E	
Data Collection	June 2014 - October 2014
Analysis/Concept Development	June 2014 - March 2015
Public Hearing	March 2015
FHWA Approval	May 2015
After the PD&E Is Completed	
Design	2017*
Construction	2020*

*Estimated, not funded or programmed



Contact Information www.CC2ST.com www.facebook.com/CC2ST www.twitter.com/CC2STrails

Jack Kostrzewa Project Manager Capital Region Transportation Planning Agency 850.891.6809 jack.kostrzewa@talgov.com	Jon Sewell, AICP Project Manager Kimley-Horn 850.553.3515 jon.sewell@kimley-horn.com
--	--



NEWSLETTER # 1

Coastal Trail Project Development & Environment Study

The shared use path on U.S. 98 from C.R. 59 (Lighthouse Road) to the Ochlockonee Bay Trail (Surf Road) was the top ranked project from the Capital City to the Sea Trails Master Plan. At the April 2014 CRTPA Board Meeting, the CRTPA Board approved moving forward with the National Environmental Policy Act (NEPA) documentation for the U.S. 98 corridor — now called the Coastal Trail. In Florida, NEPA is satisfied through a Project Development and Environment (PD&E) study.

This PD&E Study, which is being developed by the CRTPA in concert with the Florida Department of Transportation (FDOT) and the Federal Highway Administration (FHWA), will gather information on the social, economic, natural, and environmental impacts that may occur from the proposed transportation project. The PD&E study is a planning, engineering, and environmental report that complies with federal and state laws, including (NEPA).

The Coastal Trail corridor has been divided into three specific segments for analysis purposes and based on potential future funding, logical connections, and existing characteristics of the area. These three segments can be standalone projects within the Coastal Trail corridor and have independent utility.



The Coastal Trail will be a shared use path similar to the St. Marks Trail.

Thank you!

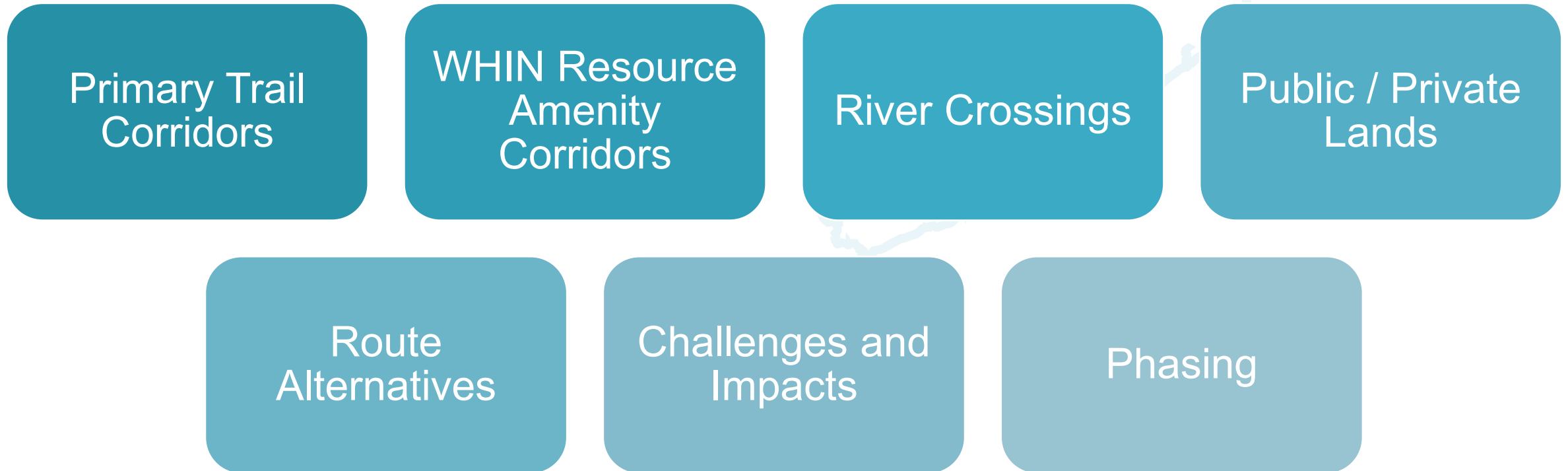
The Capital City to the Sea Trails (CC2ST) Master Plan was adopted by the Capital Region Transportation Planning Agency (CRTPA) in April 2014 with a unanimous vote by the board members! The CC2ST Project Team would like to thank you for everything you did to help make the Master Plan a success. From providing valuable input to promoting the project with your family, friends, and colleagues; this Master Plan would not have happened without you. The final Master Plan can be found at the project website www.CC2ST.com along with all the project information up to this point.



The Coastal Trail will connect to the Wakulla Welcome Center in Panama



TASK 4: Rim to Rim Project Study Area Mapping





TASK 5: **Probable Costs and Financial Feasibility**

Opinion of
Probable Cost
(Phases and
Alternatives)

Funding
Resources &
Strategies

Implementation
Plan



TASK 6: **Wabash River Greenway Promotion**

WRG Branding

County /
Municipal
Proclamations &
Resolutions

Campaign
through Existing
Outlets

Video Outreach

Coordination with
Programmed
Events

Promotional
Toolkit



TASK 7: Master Plan Documentation

Existing
Conditions
Analysis

Design Process

Community
Engagement and
Outreach

Recommendations
and Alternatives

Jurisdictional
Entity Sub-
chapters



TASK 8: Pilot Project Identification

Proposed Trail



County by County
Pilot Project
Identification



TASK 1:

Existing Conditions Documentation and Information Review

Existing Plan
Review

Historical
Research

GIS Base Mapping

Physical Inventory
/ Assessments of
ROW

External
Connectivity
Opportunities

Existing Trail
Systems



TASK 1: Existing Plan Review

Comprehensive Plan

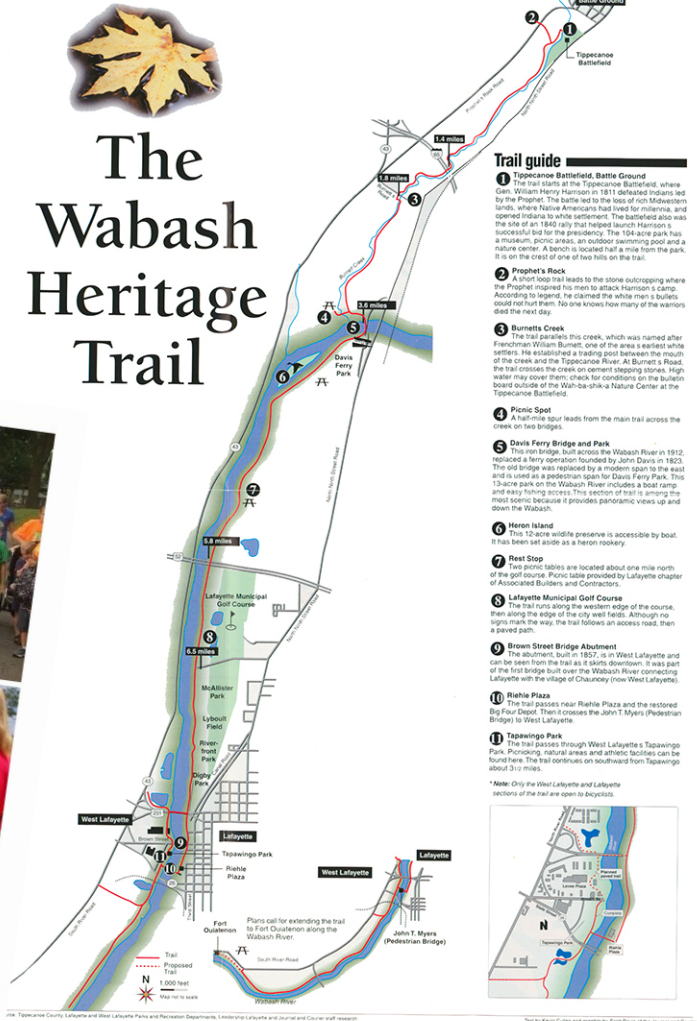
Cass County, Indiana



ADOPTED July 2009



- Approximately 30 plans / maps identified or collected for 5 primary counties
- Trail Maps
 - Scenic Route Plans
 - Watershed Plans
 - Parks and Recreation Master Plans
 - Bike and Pedestrian Master Plans
 - Trail and Greenway Master Plans
 - County Parks and Open Space Plans
 - County and Municipal Comprehensive Plans





TASK 1:

Logansport Comprehensive Plan - 2009, updated 2015



Quality of Life Goals: p E-9

Capitalize on Logansport's scenic natural environment

Accommodate cultural and social needs of the community

Encourage healthy living



Parks and Greenway: p E-15

Recreational uses of Eel and Wabash rivers

Purchasing or trading additional land for an extended greenway trail



Natural Environment and Sustainability: p E-16

Respect and enhance the natural environment through careful planning and development strategies

Preserve and protect water resources

Reactivate brownfield sites to function productively



TASK 1:

Cass County Comprehensive Plan - 2009

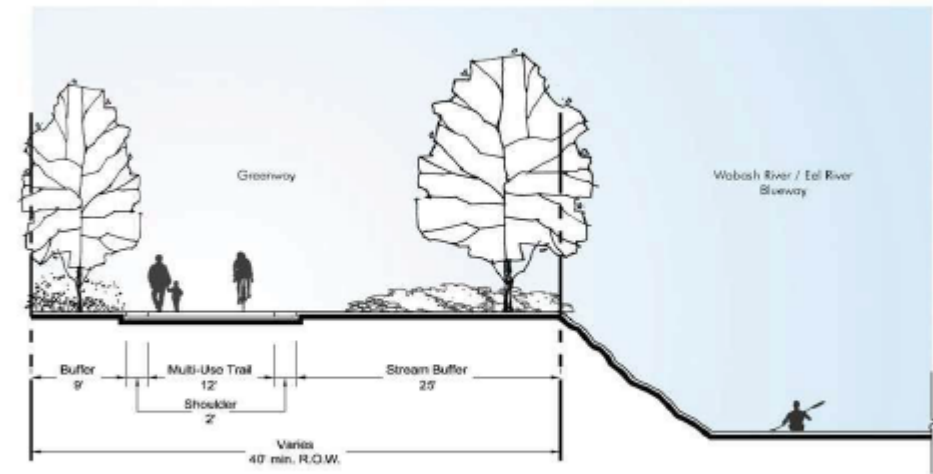
Park and Recreation Policies p 5-3

- Focus county recreation resources where they can serve as a regional attraction
- Use recreation opportunities as a part of the economic development strategy

Develop a recreational trail system that connects key destinations in the county while contributing to the regional trail network p 5-4

- Identify the land, ROW, or easement acquisitions needed for proposed trails
- Develop a blueways system for Cass County

Figure 6-6: Typical combined 'blueway' and greenway corridor section



Source: CBA



TASK 1:

Carroll County Comprehensive Plan - 2008

Transportation: p 27

- Promote a safe and appropriate alternative transportation network throughout Carroll County
- TR 4.2 Develop a trails program that works towards the identification and development of potential trail corridors linking municipalities and other destinations, where feasible.
- TR 4.3 Promote and support additional trail systems using waterways, rail corridors, and utility corridors.

Other notable plan priorities:

- Floodplain management
- Water quality
- Access to parks/open space
- Historic tourism



TASK 1:

Lafayette Comprehensive 5-year Park Master Plan 2019-2026

Public Engagement Concerns and Needs

- More rental facilities and more variety of rental facilities
- Public awareness of facilities and opportunities
- Trails and trail connections including bike lanes
- Engagement with the Wabash River
- Natural spaces
- Wi-fi availability in all parks
- Special needs play accommodation
- Trails are ranked second to splash pads in future facilities to be added to parks
- Mountain bike trails
- Wildlife viewing
- Scenic gather spots

TASK 1:

Master Plan for the Wabash River Greenway - 2010

West Lafayette, Lafayette, and Tippecanoe County all share goal of trail connectivity

Extend and Connect Wabash Heritage Trail

100 year floodplain = minimum base for greenway

Use streams (ex. Burnett Creek and Indian Creek) to create loops

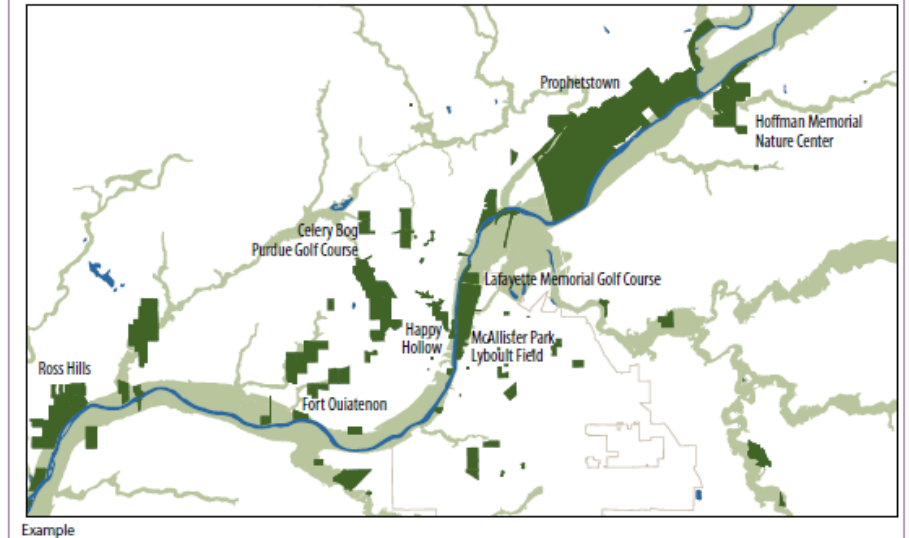
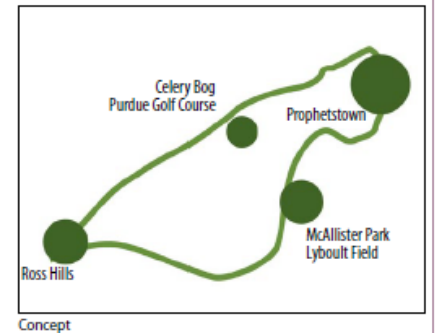
Add trailheads, boat access, day-use areas, overnight areas & pull-off sites for observation and interpretation

Use of roadway loops and historic canal towpath routes

The Greenway as Part of a Comprehensive Plan

Rather than being an isolated entity, the greenway should be part of the region's comprehensive vision for conservation lands, parks, sports areas, cultural sites, public gardens and other amenities that contribute to its quality of life. Sometimes called a "links and nodes" concept, the greenway would help to provide connectivity among those sites. The concept is also comparable to the philosophy of developing "green infrastructure," i.e., an interconnected network of conservation lands that provide ecological, recreation and other services. The approach would be consistent with the planning policies of the Tippecanoe County Area Planning Commission, as well as the parks departments of Tippecanoe County and the cities of Lafayette and West Lafayette.

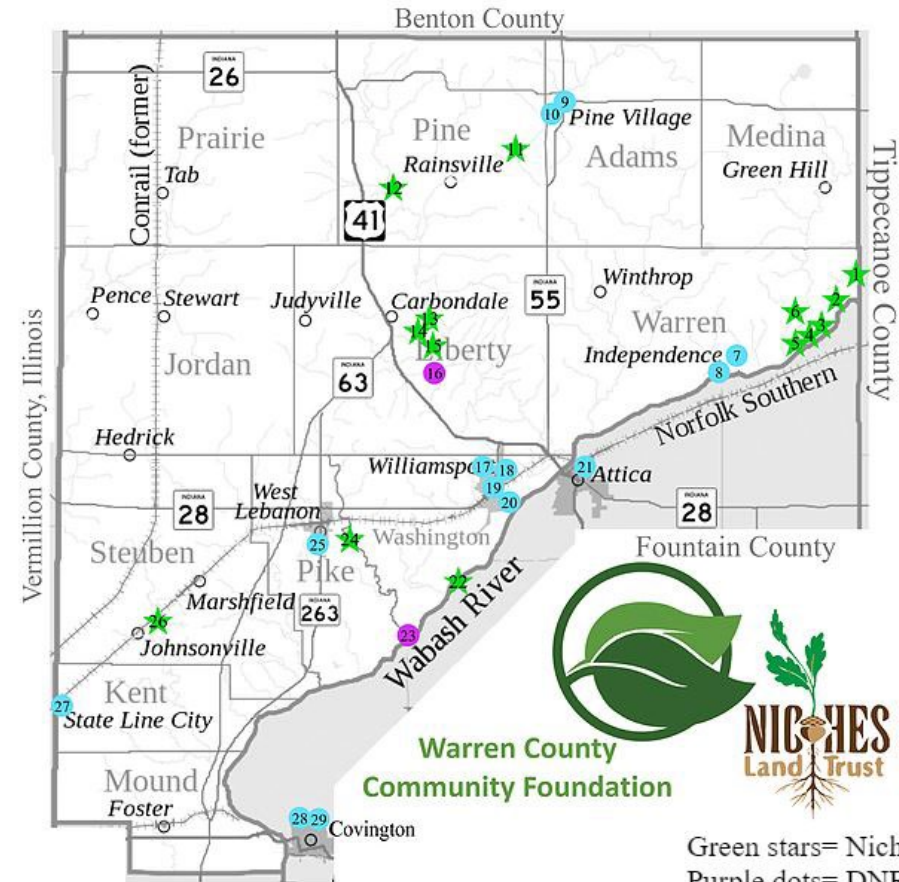
One illustration of this concept is the greenway's potential development along the Wabash River, Indian Creek and Burnett Creek, thereby creating a natural loop of conservation lands that provide connections to major parks such as Prophetstown and Ross Hills, natural areas such as Celery Bog, and sports complexes such as Purdue's and Lafayette's golf courses.



TASK 1:

Warren County – Parks & Open Space

- Potawatomi Trail
- Black Rock Nature Preserve
- Weiler-Leopold Nature Preserve
- Cicott Trading Post Historic Park & Potawatomi
- Springs Fall Creek Gorge
- Williamsport Falls
- Williamsport Old Town Park
- Shawnee Bottom
- Portland Arch
- Rock Creek Nature Preserve



Warren County
Community Foundation



Green stars= Niches properties
Purple dots= DNR properties
Blue dots= County owned properties



TASK 1:

City of Attica Comprehensive Master Plan 2019-2026

Quality of Place:

Ouabache Park:

- Scenic, fishing, boating, bird watching, hiking – underutilized
- Boat put-in and overlook difficult to access
- Trails not paved or well-marked

Recreation:

- Smooth and scenic roads in and around Attica are popular with cyclists and motorists
- Visitors come from extended distances (Badlands, etc.)
- Opportunity for athleisure tourism

Special Projects:

- Wifi / data coverage





TASK 1:

Historical Research

County by County Effort & Documentation

- Historical Society Archives
- Museums & Libraries
- County and City Historians
- Photos & Document Searches
- Mapping of Wabash & Erie Canal historic alignment
- Wabash River focused video documentaries
 - *“Along the Wabash”* WTIU Bloomington
 - *“Wabash Life on the Bright White River”* WFYI Indianapolis



*Feast of the Hunters
Moon, West Lafayette,
Tippecanoe Co.*





TASK 1:

Historical Contacts



Thelma Conrad

Cass County IHS Historian & Historical Society

Mark Alan Smith

Carroll County IHS Historian

Steve Mulligan

Carroll County Historical Society

Quentin Robinson

Tippecanoe County IHS Historian

Craig Hadley, E.D.

Tippecanoe County Historical Association

Terri Wargo

Warren County IHS Historian & Historical Society

Carol Freese

Fountain County IHS Historian

Susan McGrady

Fountain County Historical Society



TASK 1:

GIS Base Mapping

Environment – 15 layers

- Agriculture Cultivated Areas
- Land Cover 2011
- Managed Lands IDNR
- Soils survey

Geology – 8 layers

- Physiography National Natural Landmarks
- Physiography Natural features

Government – 1 layer

- Local Boundaries Minor Civil Divisions

Imagery – 1 layer

- Orthos 2018

Hydrology – 14 layers

- Canals Historic Routes
- Floodplains FIRM
- Water Bodies Streams
- Water Quality Streams Impaired
- Watersheds HUC12 2009
- Wetlands NWI

Infrastructure – 25 layers

- Bridges – all (3 qty)
- Facilities Historic Districts IDNR
- Interstates Roadways INDOT
- Railroads Active Abandoned INDOT
- Recreation Trails IDNR
- Schools IDOE
- Streets Roads INDOT 2015

Reference – 5 layers

- Elevation Contours 24k USGS
- Land Parcels County IGIO



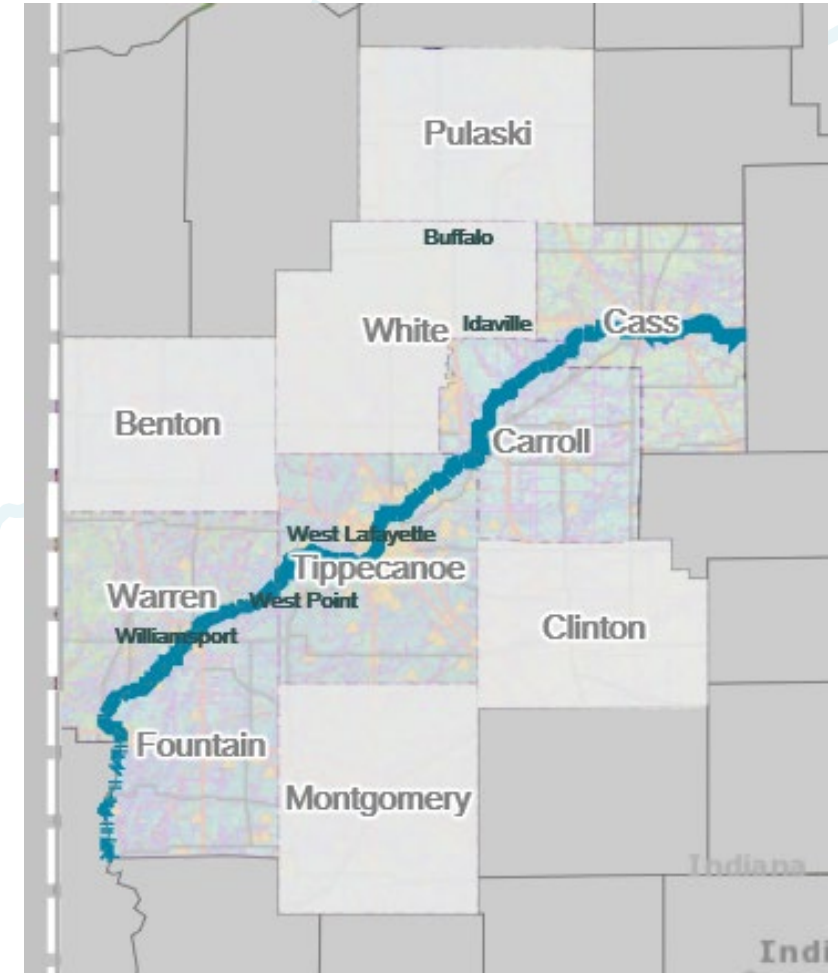
TASK 1:

GIS Base Mapping

Essential Layers:

Land Cover 2011
Managed Lands IDNR
Remediation Brownfields
Boundaries Misc IGIO
Canals Historic Routes
Floodplains FIRM
Land Parcels County IGIO
Water Bodies Lakes
Water Bodies Rivers
Water Bodies Streams

Watersheds HUC10 2009
Wetlands NWI
Orthos 2018
Bridges – all 3
Building Footprints Microsoft
Railroads Active Abandoned
INDOT
Recreation Facilities IDNR
Recreation Trails IDNR
Streets Roads INDOT 2015
Elevation Contours 24k USGS

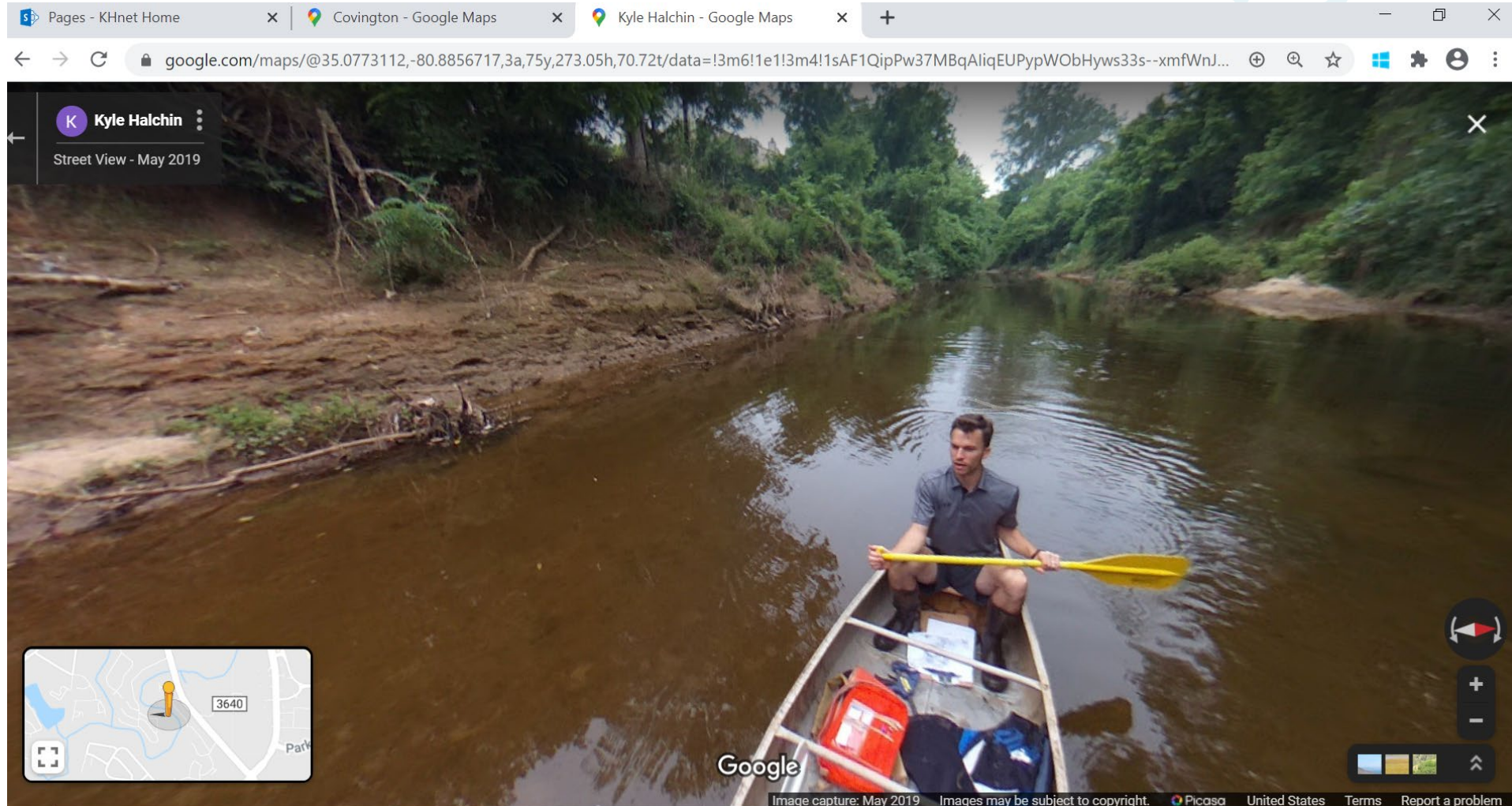


<https://maps.kimley-horn.com/portal/home/webmap/viewer.html?webmap=fc85bbfbf3fe401b8e55959dbc6b2c74&extent=-88.0732,39.9138,-85.361,41.1526>



TASK 1:

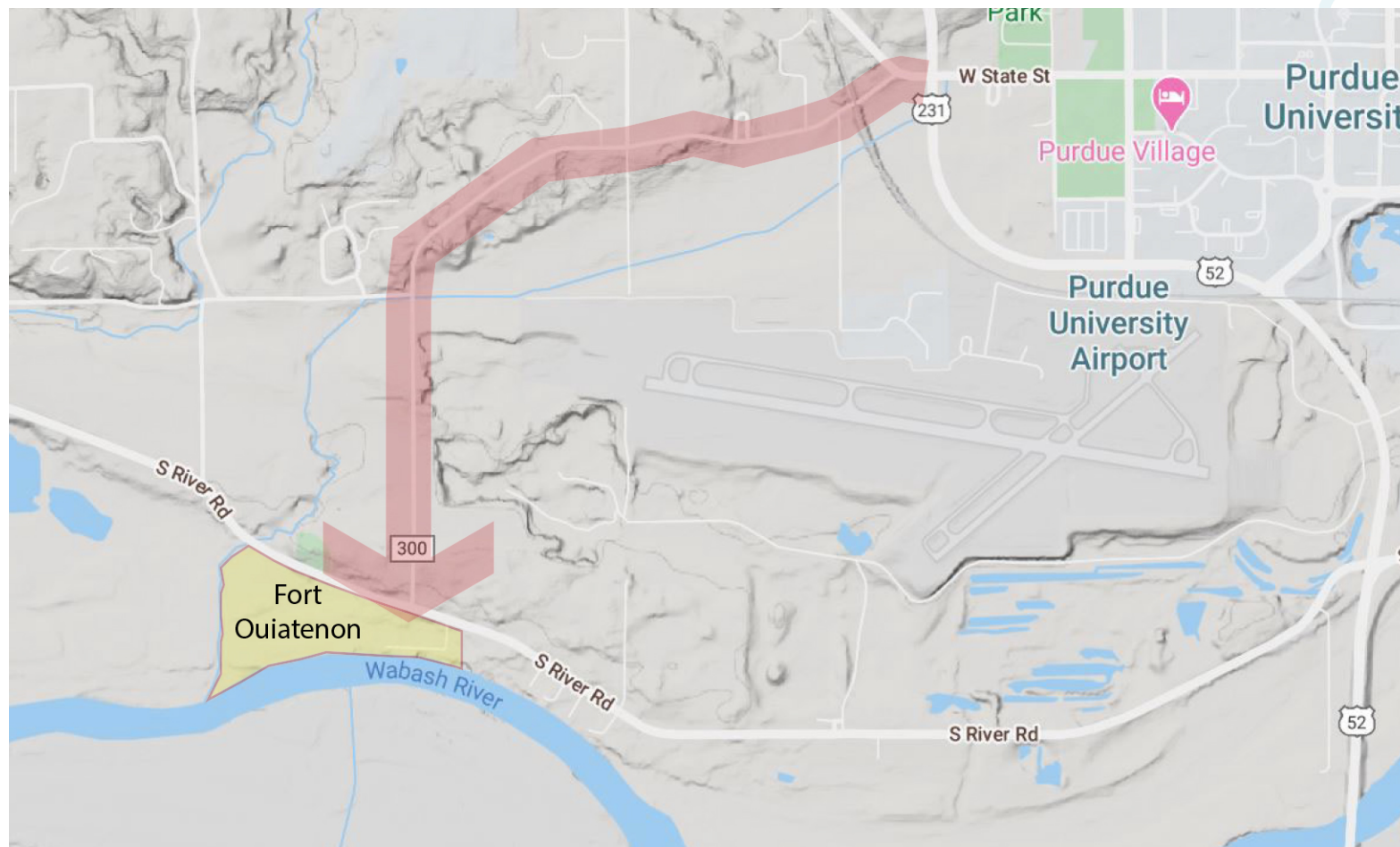
Physical Inventory / Assessments of Right-of-Way





TASK 1:

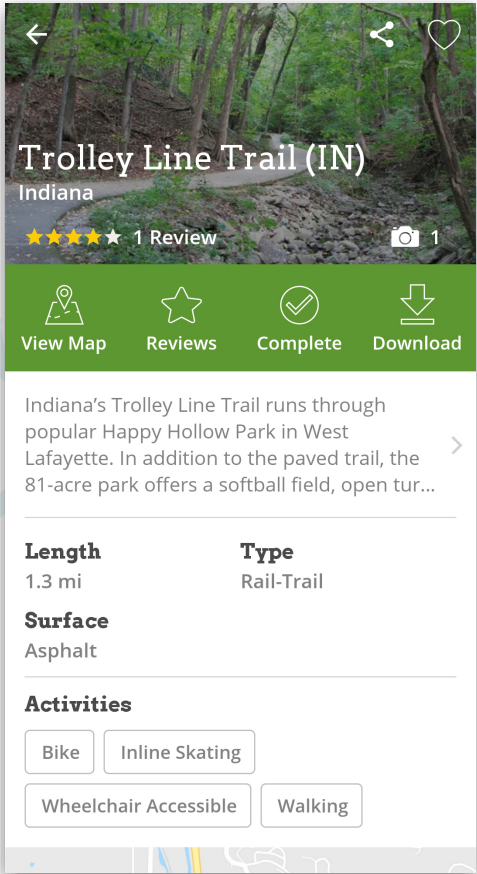
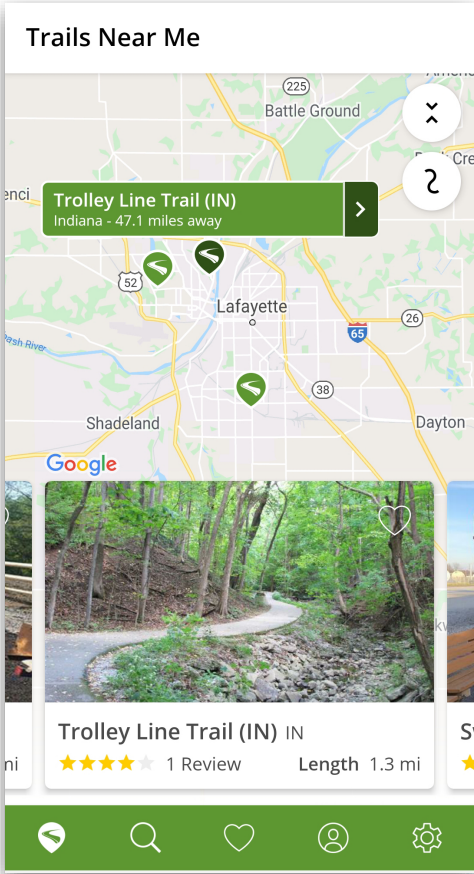
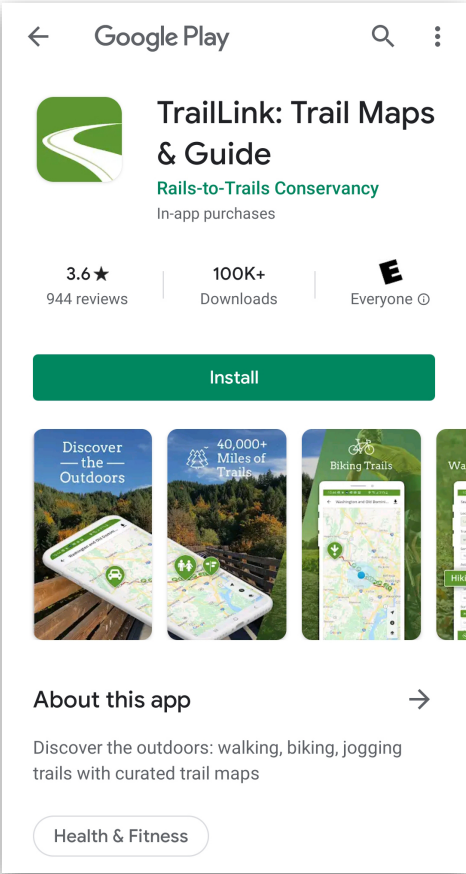
External Connectivity Opportunities





TASK 1:

Existing Trail Systems





Questions?